



Green Renewable Energy Affordable Tariff

Introduction

Inspired Solutions has created a dynamic new way to provide affordable energy to our tenants, using proven green energy technologies from other sectors - including hotels, leisure, transport, and manufacturing – and adapted them for use in our homes.

We always put tenant wellbeing at the heart of everything we do. We have looked at current and future needs, researching the very best of the available proven technology to design and create high quality, inclusive homes that have the highest possible energy efficiency.

As part of our tenant focused strategy, we decided that our tenants should be able to heat their homes throughout the year without the fear that they may not be able to afford it.

So, we built the Green Renewable Energy Affordable Tariff.

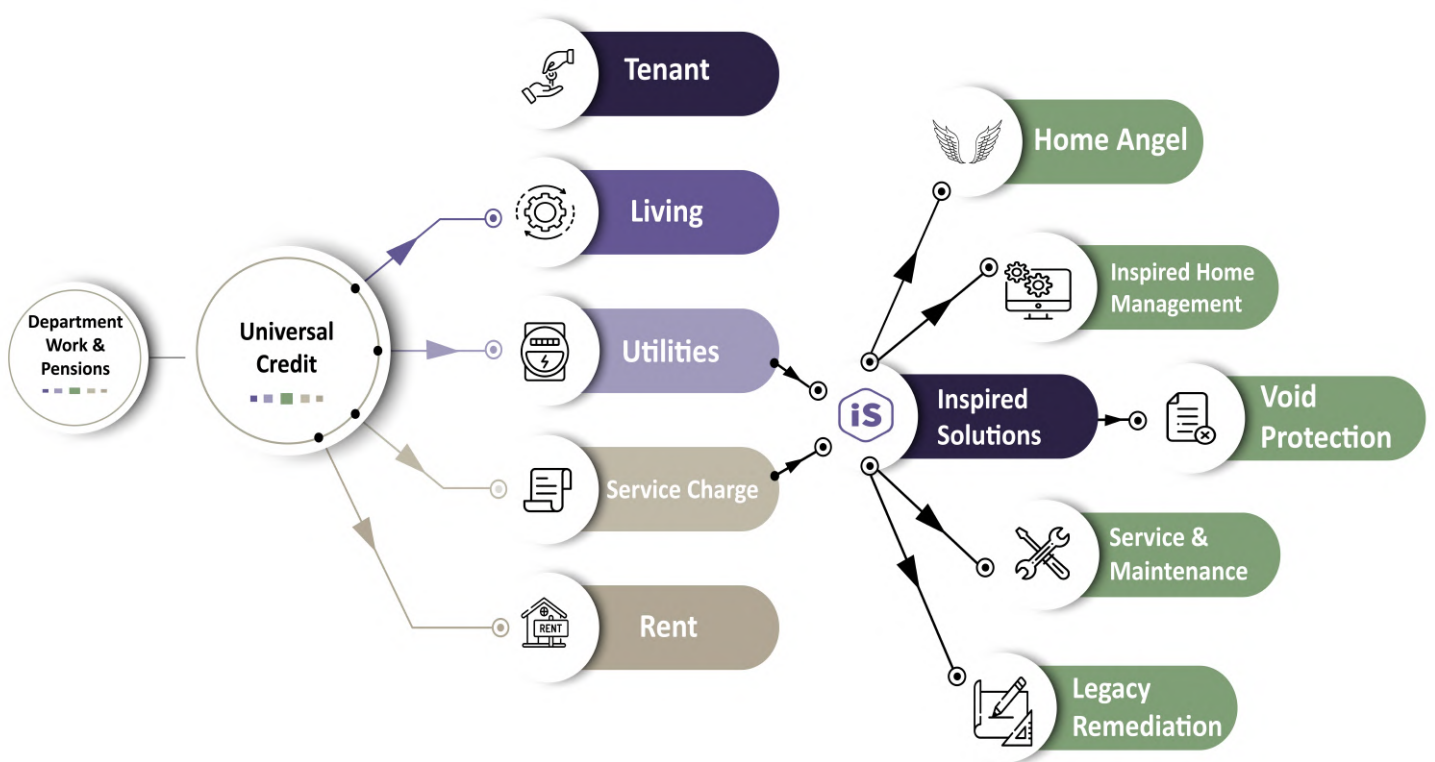
Current Situation

Rising fuel prices affect everyone, but particularly the most vulnerable. People and families, the elderly and those on the lowest incomes are being forced to choose between food or heating. The physical and psychological damage that this causes tenants is leading to many health problems that the National Health Service are struggling to cope with. According to [a report by Age UK](#), health conditions related to lack of heating cost the NHS £1.36 billion each year and an estimated 27,000 excess winter deaths.

There are two key issues that urgently need to be addressed in order to remedy this situation:

1. People and families cannot afford the energy prices and the cost of living crisis is forcing them to make impossible decisions.
2. The homes are so poorly insulated that it costs significantly more to heat the home than a new build home of the same size.

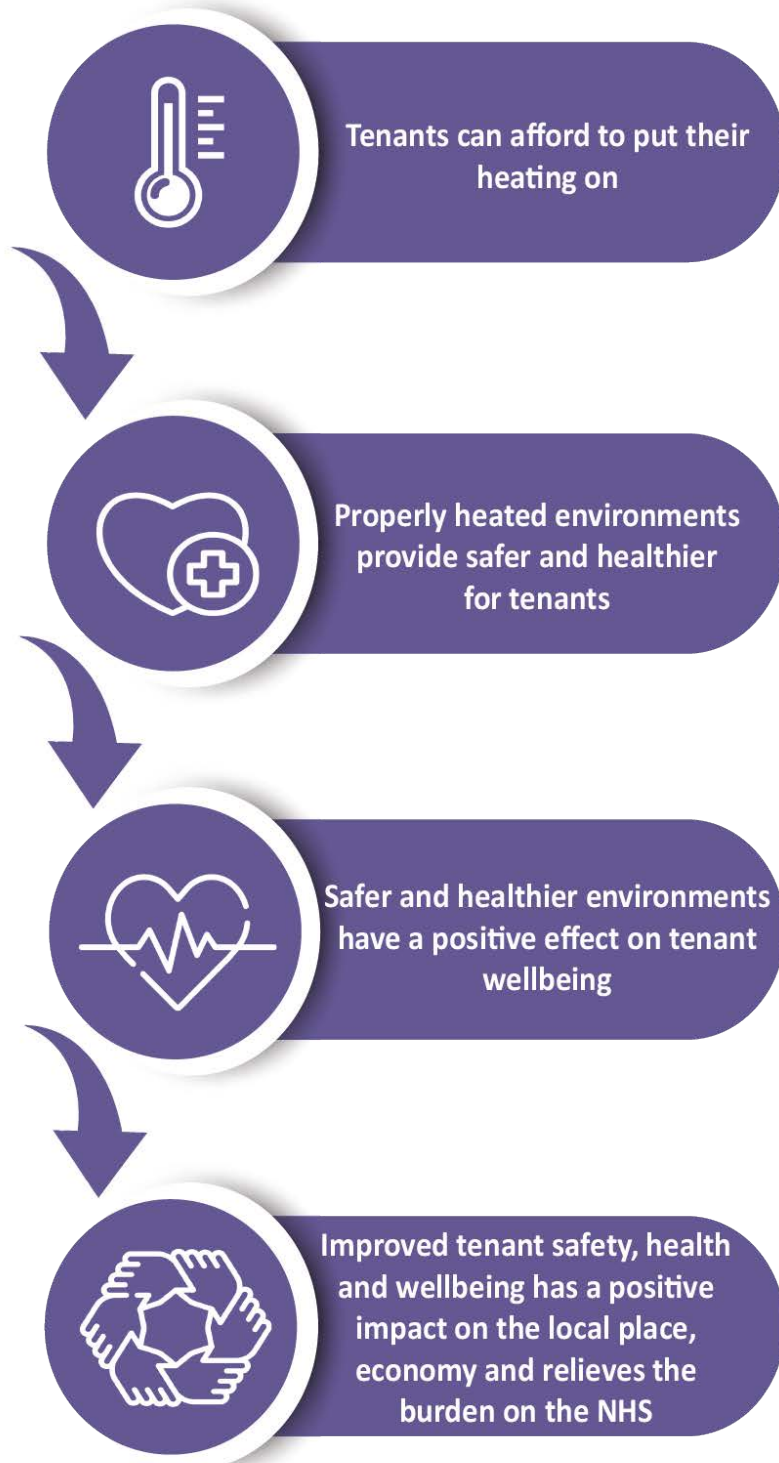
Our Solution: What Does Inspired Solutions Do With The Green Energy Utilities Service Charge?



Green Renewable Energy Affordable Tariff

The Green Renewable Energy Affordable Tariff has been created to allow tenants to afford electricity and heating in their homes. Through the combination of multiple proven technologies it will enable the tenant to have a minimum of 40% cheaper energy than the grid would normally charge.

The benefits of the tariff are:



All our homes will be insulated in accordance with SAP/TFEE and SBEM standards as outlined in the building regulations. We go above and beyond this, by combining multiple renewable technologies to create our Green Renewable Energy Affordable Tariff.

Sites may vary due to restrictions in the area, but the elements of our strategy can be combined in multiple scenarios to address any constraints as required.

Each home has a selection of solar panels and small wind turbines which will generate a significant amount of electricity into the home. The organic waste produced from humans is collected and biogas is created through our onsite production centre. This feeds the Combined Heat and Power engine to produce electricity. If Biogas capacity is low it will use natural gas.

A typical combination in a housing scheme is as follows, in the order of hierarchy of use:



Wind Turbine

A small wind turbine is positioned on the roof of the property. This discreet device will generate a significant amount of electricity for the home (no noise generation).



Solar Panels

Each home will have a set of solar panels or roof solar panels (subject to planning).



Biogas Production

Organic waste from humans will be used to generate biogas to feed the combined heat and power unit.



Solar Panels

The combined heat and power unit will create electricity. This will be fed via biogas or natural gas.

